

THE CORPORATION OF THE TOWNSHIP OF WELLESLEY

BY-LAW NUMBER 28/2017

Being a By-law to Designate Community Improvement Project Areas

WHEREAS Section 28(2) of Part IV of the Planning Act, R.S.O. 1990, C.P. 13 (“the Planning Act”), empowers the Council of a municipality in which an Official Plan is in effect to designate the whole or any part of the municipality covered by the Official Plan as a Community Improvement Project Area

AND WHEREAS Section 5.1.1. of the Township of Wellesley Official Plan states that Council may pass a by-law to designate part of, or the entire township, as a Community Improvement Project Area in accordance with Section 28 of the Planning Act

WHEREAS Section 28(1) of the Planning Act, defines a “Community Improvement Project Area” as a “municipality or an area within a municipality, the community improvement of which in the opinion of Council is desirable because of age, dilapidation, overcrowding, faulty arrangement, unsuitability of buildings or for any other environmental, social or community economic development reason”

WHEREAS the Council of the Corporation of the Township of Wellesley deems it desirable and in the interest of the municipality and the public to designate land hereinafter described as Community Improvement Project Areas

NOW THEREFORE the Council of the Corporation of the Township of Wellesley enacts as follows:

1. That lands identified on Schedule “A” and Schedule “B” to this by-law, which generally represent the core areas and surrounding lands of the Settlement Areas of Wellesley and St. Clements, are hereby designated as a Community Improvement Project Area to be known as the ‘Primary Community Improvement Project Area’
2. That lands designated ‘Settlement Core’ in the ‘Service Settlement Areas’ of Crosshill, Hawkesville, Heidelberg, Linwood, and Wallenstein, as identified on Maps 5.2, 5.4, 5.5, 5.7, and 5.10 of the Wellesley Official Plan, are hereby designated as a Community Improvement Project Area to be known as the ‘Secondary Community Improvement Project Area’
3. This By-law shall come into effect on the final passing thereof by the Council of the Corporation of the Township of Wellesley, subject to compliance with the provisions of the Planning Act, R.S.O. 1990, c. P.13, as amended.

Read a first and second time this 23rd day of May, 2017.

Mayor Joe Nowak

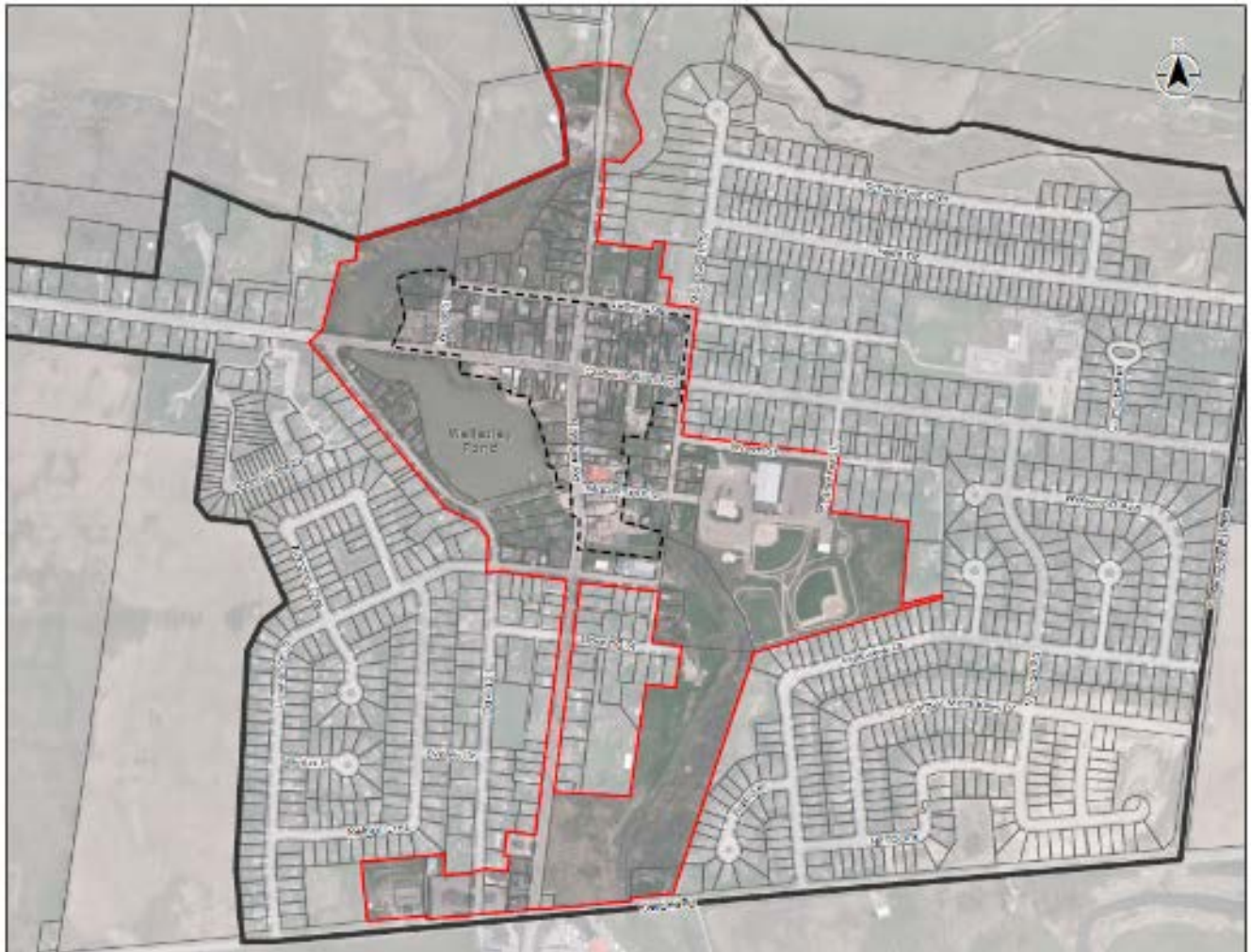
Clerk, Grace Kosch

Read a third and final time and passed this 23rd day of May, 2017





Mayor Joe Nowak

Clerk, Grace Kosch

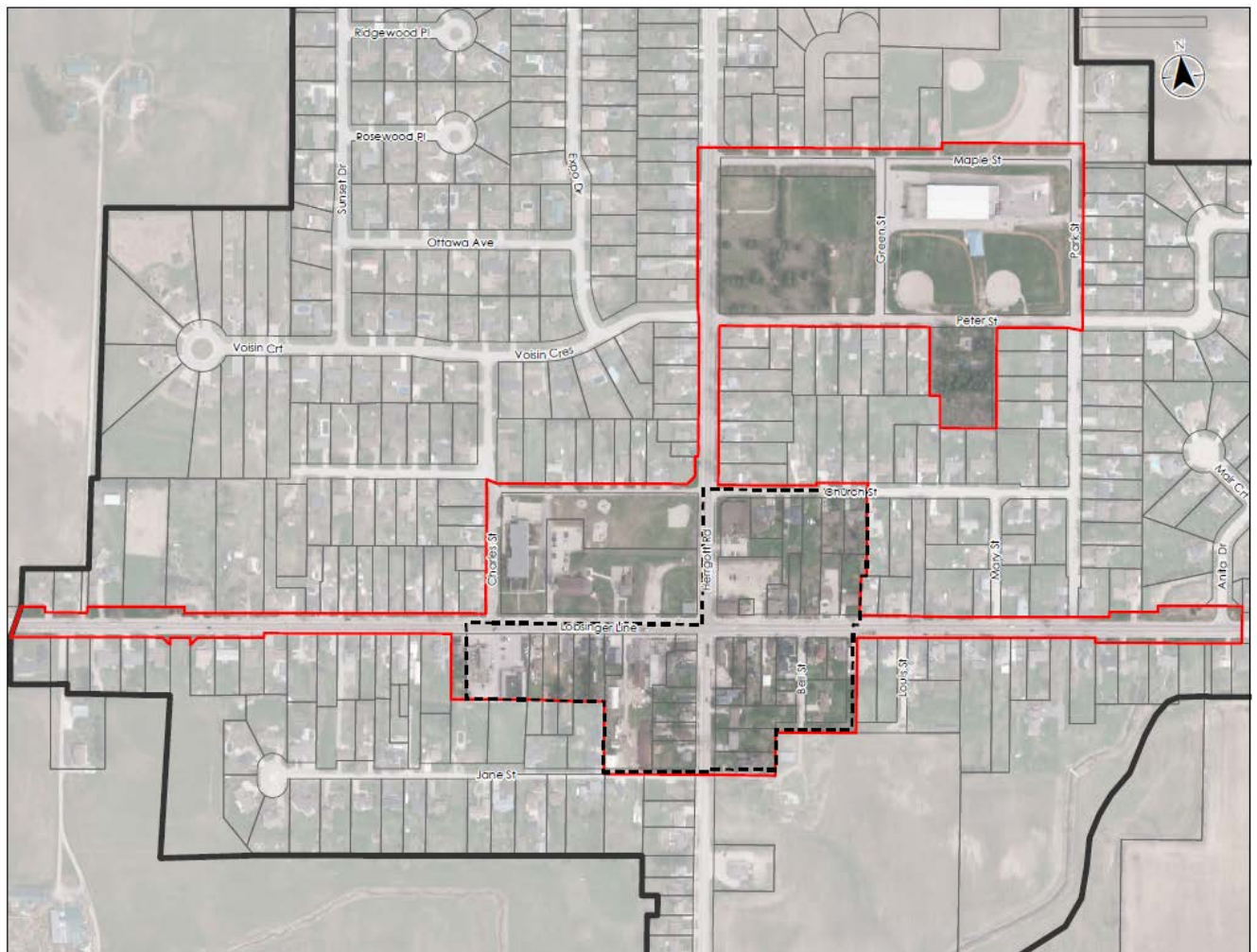
SCHEDULE "A"
To
By-law 28/2017







Legend

-  Settlement Boundary
-  Community Improvement Project Area
-  Core Area Designation (Official Plan)
-  Property Parcels

SCHEDULE "B"
To
By-law 28/2017



Legend

-  Settlement Boundary
-  Community Improvement Project Area
-  Core Area Designation (Official Plan)
-  Property Parcels